



www.robintexbd.com

ROBINTEX GROUP



Partial View of ROBINTEX Factory Complex

Factory
Vulta, Rupganj, Narayanganj
Bangladesh

Robintex (Bangladesh) Ltd.

| | |
|-----------------------|--|
| Year of Establishment | 1996 |
| Manpower | 3500 |
| Floor Space | 300,000 SFT |
| Production Capacity | 12 tons of fabrics per day 40,000 pcs of garments per day |

Robin knitwear Ltd. (Special Unit)

| | |
|-----------------------|--|
| Year of Establishment | 2002 |
| Manpower | 150 |
| Floor Space | 10,000 SFT |
| Production Capacity | 5,000 pcs of fashionable garments per day |

Complex Bangladesh Ltd.

| | |
|-----------------------|--|
| Year of Establishment | 2003 |
| Manpower | 4000 |
| Floor Space | 400,000 SFT |
| Production Capacity | 12 tons of fabrics per day 60,000 pcs of garments per day |

From SAKHAWAT ABU KHAIR MOHAMMED
MANAGING DIRECTOR



Robintex Group has been operating in the export oriented composite knit garment industry of Bangladesh since 1996.

A Bangladesh-Germany joint venture, it has deliberately identified some of the complementary advantages from both these countries to flock together to accumulate one of its major organizational strengths to infuse the mainstream lifeline in its entire corporate initiative. And, it is the unique combination of Bangladesh's history-old industrial legacy and renewed pursuit for export-led and labor intensive industrial growth with the proven leadership of Germany and the West for their appropriate technological prowess and international market experience in the related field.

From the very inception, as well, our ethical practices along with industrial and social compliances too have united us with our employees and the local as well as international communities in an excellent harmony.

In fact, for all of its professional sincerity and commitments, Robintex could take off very early along a steeper growth path. Initially we invested about US\$3M, employed only 236 people and posted our first ever export worth just about US\$0.092M in the year 1997. Today, an aggregate investment of US\$95.55M, direct employment of 7500 people, and an export of about US\$65.11M in 2011 would mean in short what Robintex is all about.

Thanks to our valued customers for their continued confidence on us, our export has been increasing, on average, at the rate of about 27.50 percent a year for over the last decade despite the tethering global economic recession. As conservatively projected based on our buyers' commitments, however, our business would continue to grow in the same fashion for years to come and, therefore, we have gone for further expansion to increase our production capacity by 25 percent to about 6 million pieces of garments a year.

As an approved manufacturer and exporter to work for some of the world reputed and quality sensitive apparel brands, Robintex is keen to ensure quality in production, and to endorse the optimal value to all who make the whole value chain it deals with.

A handwritten signature in dark ink, appearing to read 'S. Khair'.

(Sakhawat Abu Khair Mohammed)

From SAKHAWAT ROBIN RAZON

DIRECTOR



Robintex Group is very much particular about some of the basics in its deliberate endeavor of being innovative, and it is actually about a successful blending of western and oriental best of industrial aspects.

Having direct national heritage from both of Bangladesh and Germany, Robintex knows well, on one hand, that Bangladesh has huge workforce contingent rich in craftsmanship, its economy is thriving for economic growth thru export oriented industry, and, since history, this country has been showing its epic potential in textiles & clothing, while, on the other, it is also aware that Germany has the mastering technologies to dominate the global textile & apparel industry and it has the ultimate knowledge in the world trade in the same stuff as one of the world's best marketing destinations of its kind.

Robintex puts all those strengths together. It also makes use of the selected cutting edge technologies and expertise from other nations champion in this industry. And thus, it has very successfully strategized to benefit itself and the worldwide apparel traders and consumers by offering knitwear ensuring height of quality, maintaining delivery schedule most professionally, and, on top, contending for the price leadership which would be the most competitive in this region or, probably, in the entire world.

Indicators of our continued business growth and investment increase will tell about our success which we have shared so far with our trade partners around the globe.

Some of the leading and highly acclaimed global sources for reliable business news and financial information have reported that Bangladesh, as socioeconomically and naturally poised, will emerge as one of the top two contenders for leading the apparel supply in the international market within just half a decade from now. History suggests this industry needs decades together to change the leading positions. Certainly, this is the emerging industrial prospect of Bangladesh, and Robintex is committed to remaining in the forefront of this journey. All the way, with appropriate technological profile and costing efficiency programs, it will dedicate itself to keep on sharing its success with the global communities engaged in the world trade in textiles & clothing for many years yet to come.

For our valued clients, however, I would like to put on record with immense confidence that they will love the total benefit we offer in the tangible package of knitwear manufacturing and exporting.

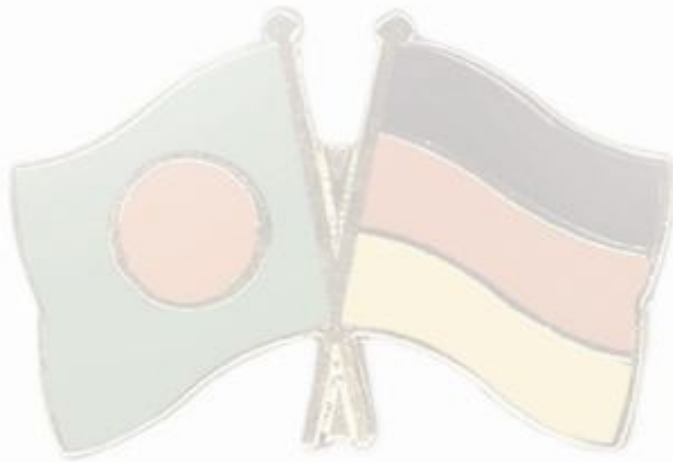
Yes, we Robintex truly believe we and all of our trade partners will benefit from the unique and innovative industrial merits which we have been developing over time as the one and only German-Bangla Multinational in the entire garment industry of Bangladesh.

A handwritten signature in black ink, appearing to read 'R. Sakawat'.

(Sakhawat Robin Razon)

Vision

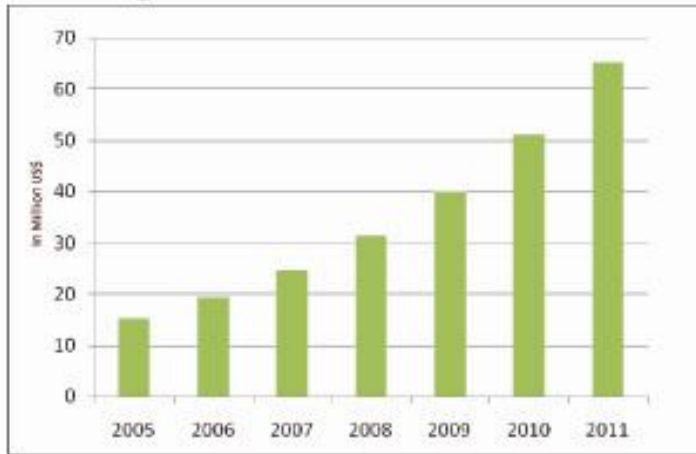
The vision of Robintex Group is to emerge as a premier manufacturer and exporter of all kinds of knitwear in the world market thru the innovative blending of western and eastern best of industrial techniques and technologies.



Mission

The broad mission of Robintex Group is to offer its customers the best possible price, satisfaction and value for their money providing them with one-stop knitwear sourcing facilities.

Export



Increasing by more than 27.50 percent every year for over the last decade, Robintex exported apparel worth about US\$65.11M in the year 2011. It projects to export about 36 million pieces of apparel worth about US\$90M in 2012.



Robintex maintains delivery deadlines as part of its unfaltering professional commitments.



ZARA



MARKS &
SPENCER



OUR GLOBAL PARTNERS



WAL★MART



H&M



TESCO

MCXX



Certificates & Recognitions



BCI Better Cotton Initiative



Robintex is proud to be a Disney Approved Manufacturer of Apparel. Besides, an active member of BCI, it has successfully obtained ISO, Organic Cotton Certificate, i.e., Control Union Certificate and several others. But, on top, it believes its clients' satisfaction is the best of all.



PRODUCTS

From inception, Robintex has been mastering in making Tee and Polo but over time it has equally developed its expertise in producing all kinds of quality knit apparel for gents, ladies, children and infants in both fashion and casual categories.





GENTS'





LADIES'




CHILDREN'S AND KIDS'





Factory Premise



Robintex Group has three running concerns, Robintex (Bangladesh) Ltd, Robin Knitwear Ltd and Comptex Bangladesh Ltd, in the composite knitwear sector and all of its factories are lavishly accommodated in a 35 acre single premise situated at Vulta, Narayanganj - about 15KM to the east of Dhaka, just by the highway that connects the Capital City with the country's international Port City, Chittagong.

With the world leading machinery, technology and expertise from Germany, USA, UK, Japan, Switzerland, Australia, Italy, Singapore and India, it has been purposefully configured to qualify to be a full-fledged vertically integrated composite knit premise. Beside all of required utilities and about 0.71 million square feet of floor space for production, it has plenty of open space, lush greenery and necessary environment protection measures as well. With 1864 sewing machines, here, about 7500 skilled workforce members are working in an ideal environment to produce about 0.1 million pieces of high quality and diverse types of knit garments every day.

Conceding to its buyers' increasing demands, Robintex has now committed an additional investment worth about US\$28.20M in the same premise to strengthen and enhance its production capacity. Having completed the expansion, as scheduled to be completed by 2012, it would be able to produce additional 5.5 tones of fabrics and about 25,000 pieces of high quality knit garments every day.





Utilities

Robintex's 120-cubic-meter-an-hour capacity effluent treatment plant of most contemporary technology dehydrates sludge, and cleanses dyeing effluents both chemically and biologically.





Robintex intakes all of its water from its deep water pumps but yet it invariably cleanses this intake through a US origin treatment plant.



Robintex uses boilers from LOOS INTERNATIONAL of Germany.



Knitting

Using the world's latest and most dependable computerized circular and flat knitting machines, it manufactures numerous varieties of knit fabrics including single and double jersey, rib, drop rib, any elastane, interlock, Pique, engineering stripe, terry brush back fleece and sweat etc using any type of blends like cotton, cotton-poly, modal, viscose, poly viscose, tensil, coolmax and many more as stipulated by its clients.





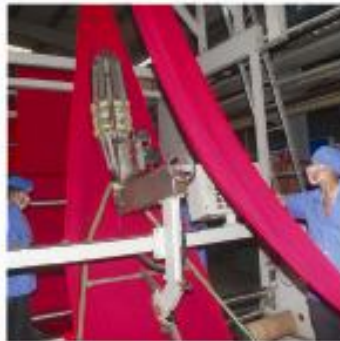
It uses Germany origin high speed Terrot circular knitting machines of top-notch quality. The knitting facility of Robintex Group can produce all of the knit fabrics it needs to meet its entire export demands



Dyeing

One of the salient and most prolific features of Robintex, its Eco-friendly 24-ton per day capacity state of the art dyeing facility has the capability of tubular as well as open width dyeing. It has both atmosphere and high temperature dyeing machines. Robintex can meet single and double dyeing requirements in a lavish way. Its Stenter, Straightener, Compactor and all other dyeing finishing machines are from Germany. Foreign experts help maintain the group's dyeing standards and develop its local expertise as well. Robintex has most contemporary sample dyeing machines also.





Altogether, Robintex's dyeing facility results in a clone-like perfection.



Laboratory

To ensure the height of quality in knitting and dying, Robintex has got a top of the line central laboratory equipped with machinery and technology mainly from EU and USA. Here, it customarily conducts wash test, pilling test, color fastness test, shrinkage test, color fastness to light test etc. Shade of every lot of finished fabrics is verified thru Data Color and Brand Color machines. As desired by the buyers, it carries out several other most contemporary and very sophisticatedly calibrated test protocols too to check for its products' Eco-suitability and impact on human health.





Washing

Washing facility of Robintex is independently capable of processing any type of washing contemporarily required in the global knitwear industry. It efficiently meets the group's entire washing requirements.



Printing

Robintex is capable of printing conforming to any type of specifications in film to screen developments. It has flat-bed and cylinder-bed as well as rotary printing machines. It can apply Pigment, Rubber, Discharge, Flock, Foil, Photo, High Density, Reactive, Emboss, Puff, Burnout, Tie-dye, Stone & Stud, Heat Transfer and several other printing techniques. Its Germany origin Hebbecker Automatic Printing machine render results in an assortment of 12 colors together. This facility can print about 60,000 pieces of apparel every day.



Printing

Robintex is capable of printing conforming to any type of specifications in film to screen developments. It has flat-bed and cylinder-bed as well as rotary printing machines. It can apply Pigment, Rubber, Discharge, Flock, Foil, Photo, High Density, Reactive, Emboss, Puff, Burnout, Tie-dye, Stone & Stud, Heat Transfer and several other printing techniques. Its Germany origin Hebbecker Automatic Printing machine render results in an assortment of 12 colors together. This facility can print about 60,000 pieces of apparel every day.





Robintex has got an unmatched sample development facility manned with highly experienced top of the class master tailors in the industry.

Sample and Marker Development



Based on the approved samples, and supported with the computer aided system hottest in the contemporary world, Robintex develops markers to thrive to ensure each piece of apparel it makes would be an identical reproduction of the approved samples and the fabrics it uses would leave the minimum wastages possible.





Cutting



Most contemporary on the global stage, its automatic cutting solution too is configured to help ensure precision, identical reproduction and wastages minimization. It reduces labor overhead and infiltration of human errors also.





The production floors of Robintex are really meant for continuous quality surveillance. At present, it is working conforming to AQL 2.5 on way to achieving the AQL as less than 1.5 soon. But, for selective customers, Robintex conforms to AQL 1.5 also.

Sewing & Finishing

To help maintain productivity and quality, Robintex ensures that all of its sewing and other garmenting machines should be of world-class brands with semi as well as fully automated features. It has got all of the special types of sewing machinery and equipment used in the knit apparel industry worldwide. Some of those machines are like 4 Thread Overlock, Picoting, Fagoting, Auto Button Holing and Stitching, Small cylinder Bed, VT series, Flat Seaming, Kansai P.M.D., Smoking, Zigzag, Feed-Off-The-Arm and Elastic Inserting etc. Its apparel finishing section has all of the necessary machinery and equipment like thread sucker, vacuum iron table, metal detector and the like.





IT

Robintex has a LAN and WAN based multi component IT system. With a dedicated server room and 5mbps Bandwidth, its internet connectivity involves both of fiber network and wireless network subsystems to ensure 24-hour high speed access.

IEI

Conforming to a continued corporate tradition of nurturing its orientation to the world apparel market, a high profile Industrial Engineering & Innovation team is constantly searching for the best critical pathway to meeting the ever evolving newer demands and challenges in the international trade in ready-made garments. Its most advanced and dynamic ERP backed inherent system figures out the most efficient economy of scale in which cost optimization, timely delivery, global standard quality, appropriate technology, skilled human resource and, all together, the maximum benefits to the valued customers head for the optimal harmony.





HR & Compliance



About 7,500 skilled workforce members and 1000 qualified staff and professionals are now working with Robintex Group. Robintex considers this resource as one of its major success factors. And so, as a must, it maintains a very high quality of relations with its workforce contingent.

Robintex maintains a congenial working environment in which its people can truly feel their work place as their second home.

International auditing bodies carry out independent audits for Robintex to make sure all aspects of workers' rights, wages, safety as well as hygiene and security are met in a befitting way. Robintex grants some incentives, bonuses and benefits that are not legally mandatory in the country.

It keeps its human resources on a regular development program also.



Wages and other financial benefits are offered invariably on time, and as per the labor law of the country.

Certified practitioners and qualified nurses ensure medical care in its premise round the working hours. Apart from first aid supports, it provides free medicines also.

It provides its employees transport facilities.





Maternity attention, leave and benefits are provided accordingly.
Parents working with Robintex can enjoy safe and homely childcare services maintained by the trained babysitters.

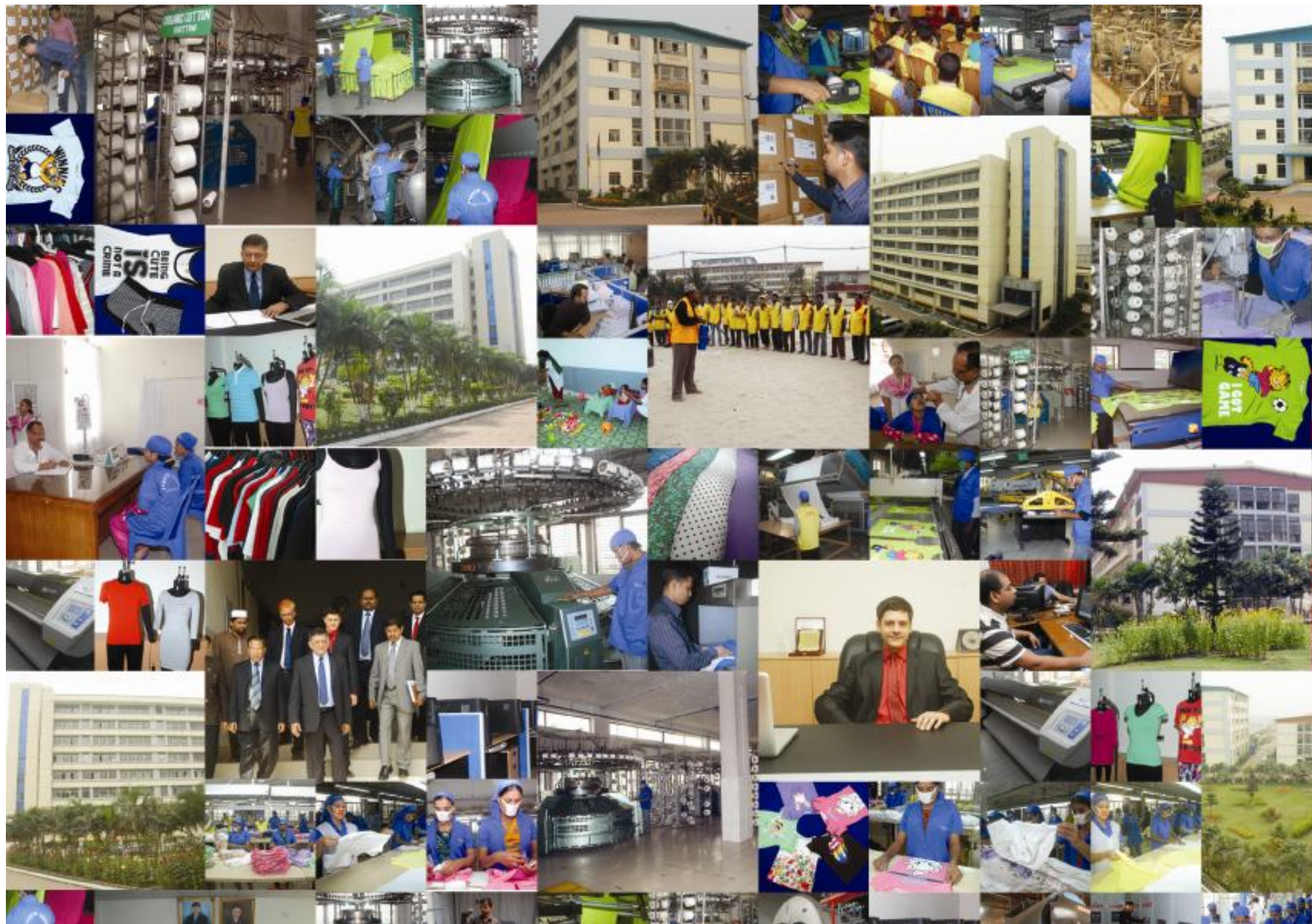
It imparts trainings to its workers regularly to help improve their productivity and develop awareness about their rights and responsibilities, and to keep them always prepared to handle different types of occupational hazards.

Robintex regularly trains its workers for safe chemical handling and firefighting. Evacuation drills are carried out on a regular schedule so that all of its people can keep themselves trained and ready to respond to quick evacuation calls in case of fire or other emergencies.

Thru a well-structured workers' participation committee (WPC), a mutual participatory approach is practiced in Robintex. Under its capacity, the top management makes itself always available to hear the workers to mitigate their grievances in a proper way.

Robintex has recently been awarded as "The Best Workers' Friendly Knit Factory" by the government of the country.









Factory

Vulta, Rupganj, Narayanganj
Bangladesh

Corporate Head Office

T. K. Bhaban (8th Floor), 13 Karwan Bazar
Dhaka 1215, Bangladesh
Phone: 880-2-9138162; Fax: 880-2-9117751
Email: mail@robintexbd.com

www.robintexbd.com

ROBINTEX (BANGLADESH) LIMITED
Robintex (Textile Division)
Knitting Section

| SL. No | Name of the Machineries | Name of the Brand | Model no | Quantity | Location |
|----------|---------------------------------------|----------------------------------|--------------|---------------|-------------------------------------|
| 1 | Circular Knitting Machine | | | | |
| | 36"x24Gx108 F | BCM (Banyan tai intl com), China | 90KJ | 12 Set | Robin. Textile 1st fl |
| | 17" x 24Gx 51F | Falmac,Singaore | FSB-3xSK | 1 Set | Robin. Tex.2nd fl |
| | 18" x 24Gx 54F | Falmac,Singaore | FSB-3xSK | 3 Set | Robin. Tex.2nd fl |
| | 19" x 24Gx 57F | Falmac,Singaore | FSB-3xSK | 2 Set | Robin. Tex.2nd fl |
| | 21" x 24Gx 63F | Falmac,Singaore | FSB-3xSK | 1 Set | Robin. Tex.2nd fl |
| | 22" x 24Gx 66F | Falmac,Singaore | FSB-3xSK | 1 Set | Robin. Tex.2nd fl |
| | 23" x 24Gx 69F | Falmac,Singaore | FSB-3xSK | 2 Set | Robin. Tex.2nd fl |
| | 24" x 24Gx 72F | Falmac,Singaore | FSB-3xSK | 1 Set | Robin. Tex.2nd fl |
| | 25" x 24Gx 75F | Falmac,Singaore | FSB-3xSK | 1 Set | Robin. Tex.2nd fl |
| | 30" x 16Gx 48F | Falmac,Singaore | FDB-1.6xRB | 1 Set | Robin. Tex.2nd fl |
| | 20" x 20Gx 40F | Zentex Asia Pte Ltd,Singapore | ZN2.0xRB | 1 Set | Robin. Tex.2nd fl |
| | 16" x 24Gx 48F | Zentex Asia Pte Ltd,Singapore | ZN3xSJ | 1 Set | Robin. Tex.2nd fl |
| | 21" x 24Gx 63F | Zentex Asia Pte Ltd,Singapore | ZN3xSJ | 3 Set | Robin. Tex.1st &2nd fl |
| | 22" x 24Gx 66F | Zentex Asia Pte Ltd,Singapore | ZN3xSJ | 3 Set | Robin. Tex.1st &2nd fl |
| | 20" x 24Gx 60F | Zentex Asia Pte Ltd,Singapore | ZN3xSJ | 2 Set | Robin. Tex.2nd fl |
| | 24" x 24Gx 72F | Zentex Asia Pte Ltd,Singapore | ZN3xSJ | 2 Set | Robin. Tex.1st &2nd fl |
| | 22" x 24Gx 44F | Zentex Asia Pte Ltd,Singapore | ZN2xDU | 1 Set | Robin. Tex.2nd fl |
| | 24" x 24Gx 48F | Zentex Asia Pte Ltd,Singapore | ZN2xDU | 1 Set | Robin. Tex.2nd fl |
| | 26" x 24Gx 52F | Zentex Asia Pte Ltd,Singapore | ZN2xDU | 1 Set | Robin. Tex.2nd fl |
| | | Total = | | 40 Set | |
| 2 | Flat Knitting Machine | | | | |
| | 52" x 14GA | JYLEH Industrial Co.Ltd.Taiwan | JF52" x 14GA | 11 Set | Garments Sub Station (Under Ground) |
| | 68" x 14GA | JYLEH Industrial Co.Ltd.Taiwan | JF68" x 14GA | 2 Set | Garments Sub Station (Under Ground) |
| 3 | Computer Flat Knitting Machine | | | | |
| | 80" x 14G | Sheng Mee MFG Co.Taiwan | SMF-121T | 6 Set | Garments Sub Station (Under Ground) |
| 4 | Inspection Machine | | | | |
| | Fabrics Inspection Machine | UzuAATPR Industry Co Ltd.Thaila | UZ-F3 | 2 Set | Robintex Ground Floor |
| | Fabrics Turning Machine | Made By China | | 1 Set | Robintex Ground Floor |

| Dyeing Section | | | | | |
|----------------|--|--------------------------|---------------------------|----------|-----------------------|
| SL. No | Name of the Machineries | Name of the Brand | Model no | Quantity | Location |
| 1 | Sample dyeing machine | ThiesGmbH & Co,Germany | Mini Soft-140/1/90 | 1 Unit | Robintex Ground Floor |
| 2 | Sample dyeing machine | ThiesGmbH & Co,Germany | Mini Soft Plus/140/1/30 | 1 Unit | Robintex Ground Floor |
| 3 | Sample dyeing machine | ThiesGmbH & Co,Germany | Mini Soft Plus/140/1/20 | 1 Unit | Robintex Ground Floor |
| 4 | Sample dyeing machine | ThiesGmbH & Co,Germany | Mini Soft Plus/140/1/40 | 1 Unit | Robintex Ground Floor |
| 5 | High Pressure dyeing Machine | ThiesGmbH & Co,Germany | Eco Soft-140/2/DS/720 | 3 Unit | Robintex Ground Floor |
| 6 | High Pressure dyeing Machine | ThiesGmbH & Co,Germany | Eco Soft-140/1/360 | 1 Unit | Robintex Ground Floor |
| 7 | High Pressure dyeing Machine | ThiesGmbH & Co,Germany | Eco Soft-140/3/540 | 2 Unit | Robintex Ground Floor |
| 8 | High Pressure dyeing Machine | ThiesGmbH & Co,Germany | Luft-Roto-Plus/140/6/1080 | 1 Unit | Robintex Ground Floor |
| 9 | Washing Machine | NGAI SHING DEVELOPMENT L | NS-2245FS | 1 Unit | Robintex Ground Floor |
| 10 | Color Mixer Machine | K+Z Corporation Ltd. | | 1 Unit | Robintex Ground Floor |
| 11 | Color Vacuum Filtering & Tube Lifting Unit | K+Z Corporation Ltd. | KZ-01/0094-3 | 1 Unit | Transfer |
| 12 | Color Mixer Machine | K+Z Corporation Ltd. | KZ-01/0094 | 1 Unit | Robintex Ground Floor |

| Finishing Section | | | | | |
|-------------------|--------------------------------------|--------------------------------------|------------------------|----------|-----------------------|
| SL. No | Name of the Machineries | Name of the Brand | Model no | Quantity | Location |
| | | | | | |
| 1 | Hydro Machine | NGAI SHING DEVELOPMENT L | NS-2542 | 1 Unit | Robintex Ground Floor |
| 2 | 4-Roll Padder Machine | Tubler Textile Mahcinary,USA | BM-9186 | 1 Unit | Robintex Ground Floor |
| 3 | 4-Roll Padder Machine | Tubler Textile Mahcinary,USA | BM-9370 | 1 Unit | Robintex Ground Floor |
| 4 | Suchy Squeezer Machine | Germany | SUVAC-TWIN(M.N-24 | 1 Unit | Robintex Ground Floor |
| 5 | Tumble Dryer | NGAI SHING DEVELOPMENTLtd, Hong Kong | NS-2320 (LOS200) | 2 Unit | Robintex Ground Floor |
| 6 | Dryer Machine | LK&LH Co.Ltd,Taiwan | CF53200NG | 1 Unit | Robintex Ground Floor |
| 7 | ALKAN stenter m/c | Turky | | 1 Unit | Comptex G. Floor |
| 8 | Slitting machine | Alkan Makina,Turky | | 1 Unit | Comptex G. Floor |
| 9 | Dryer Machine | Tubetex Textile Mahcinary,USA | 96"HQ 11 3 Section Rel | 1 Unit | Comptex G. Floor |
| 10 | Pak Nit II Tubular compactor Machine | Tubetex Textile Mahcinary,USA | BM-9809 | 1 Unit | Robintex Ground Floor |
| 11 | Pak Nit II Tubular compactor Machine | Tubetex Textile Mahcinary,USA | BM-9365 | 1 Unit | Robintex Ground Floor |
| 12 | Luffer Turk compactor machine | HAS ,Turky | | 1 Unit | Robintex Ground Floor |
| 13 | Light verivide | | | 1 Unit | Robintex Ground Floor |
| 12 | Bag Sewing Machine | Kansai Model Hc-HC-Aen | New Purchases | 1 Unit | Comptex G. Floor |

Utility Section (Textile)

| SL. No | Name of the Machineries | Name of the Brand | Model no | Quantity | Location |
|--------|------------------------------------|-----------------------------|----------------------------|----------|-------------------------------------|
| A) | Compressor | | | | |
| | KAESER Compressor | Germany | CSD-102 | 1 Unit | Robintex sub/mainte. G.Floor |
| | KAESER Compressor | Germany | CS-91 | 1 Unit | Robintex sub/mainte. G.Floor |
| | FINI Compressor | Italy | E.C.ROTAR 60E10 400 | 1 Unit | Robintex sub/mainte. G.Floor |
| B) | Air Compressor Dryer | | | | |
| | KAESER Dryer | Germany | TE121(Code- 660EI1A92 | 2 Unit | Robintex sub/mainte G.Floor |
| C) | Generator (Diesel) | | | | |
| | CATERPILLAR 377.5KVA (stopped) | USA | SR4 (Sr.No- 77SO1311) | 1 Unit | Robintex sub/mainte G.Floor |
| | Cumford-Turbo Cummins, 100 KVA | USA | LM227809- 0598/HPD6T | 1 Unit | Robintex sub/mainte G.Floor |
| | Cumford-Turbo Cummins, 250 KVA | USA | LM223440- 0197/HPD10 | 1 Unit | Robintex sub/mainte G.Floor |
| D) | Sub-station (Transformer 1200KVA,) | Bangladesh /Korea | Energy Pac /Dongbeng | 1 Unit | Robintex sub/mainte G.Floor |
| E) | Tools | | | | |
| | Bench Vice | | | 1Pcs | Robintex sub/mainte G.Floor |
| | Pipe Vice | | | 1Pcs | Robintex sub/mainte G.Floor |
| | Vertical Drill | China | SM-19G | 1Pcs | Robintex sub/mainte G.Floor |
| | Hydraulic Punch Machine | China | | 1 Set | Robintex sub/mainte G.Floor |
| F) | W.T.P | | | | |
| | Raw Water Pump Motor | KIRLOSKAR Electric,India | 3-Flnduction Motor,22 k | 2 Set | Robintex sub/mainte G.Floor |
| | Soft Water Pump Motor | Crompton Greaves, | 3-Flnduction Motor,37 k | 2 Set | Robintex sub/mainte G.Floor |
| | Hot Soft Water Pump Motor | Crompton Greaves | 3-Flnduction Motor,18.5 | 2 Set | Robintex sub/mainte. G.Floor |
| | Deep Pump Motor | Sigma, India | 3-F, 22 kW, 240 M3/h | 2 Set | Robintex sub/mainte under Ground |
| G) | Boiler | | | | |
| | LOOS INTERNATIONAL | Germany, Order no- 57283 | UL-S7000?13 bar | 1 Pc | Comptex- Utility Buil. G. floor |
| | | | | | |

| SCALE | | | | | |
|--------|-------------------------|------------------------|-------------------|----------|-----------------------|
| SL. No | Name of the Machineries | Name of the Brand | Model no | Quantity | Location |
| 1 | Analog scale | ZHUN SHENG, CHINA | | 5 pcs | Robintex Ground Floor |
| 2 | Digital scale | OHAUS Corporation, USA | CD-11 (Nmax-5000) | 3 pcs | Robintex Ground Floor |
| | | | | | |

| GARMENTS SECTION UTILITY SERVICES: | | | | | |
|------------------------------------|---|---|------------------------|----------|--------------------------------|
| SL. No | Name of the Machineries | Name of the Brand | Model no | Quantity | Location |
| A) | Generator (Diesel) | | | | |
| | CATERPILLAR, 250 KVA | USA | SR-4 (Sr. no-7TSO2420) | 2 pcs | Robintex Garments G.Floor |
| B) | Compressor | | | | |
| | KAESER Compressor | Germany | BS-61 | 1 pcs | Robintex Garments G.Floor |
| | KAESER Compressor | Germany | BSD-62 | 1 pcs | Robintex Garments G.Floor |
| C) | Air Compressor Dryer | | | | |
| | KAESER Dryer | Germany | TD-76 | 1 pcs | Robintex Garments G.Floor |
| | KAESER Dryer | Germany | TD-61 | 1 pcs | Robintex Garments G.Floor |
| D) | Boiler | | | | |
| | LOOS INTERNATIONAL | Germany, 13bar,sr no-95804, 350 k | U-HD | 1 pcs | Robintex Garments G.Floor |
| | Boiler (MEL) | MEL, BangladeshMB-1000kg/h, (2 | F-918 | 1 pcs | Robintex Garments G.Floor |
| E) | Sub-station (Transformer, 400 KVA, 11KV/415V) | Power Mann | (Bangladesh) | 1 unit | Robintex Garments G.Floor |
| F) | Fire Fighting Pump Motor | TECO Elect 3-Φ Induction Motor,75 kw,2950 rpm | | 2 unit | Robintex Garments Under Ground |
| G) | Fire Fighting Pressure | TECO Electric 3-Φ Induction Motor,5.5 kw,2900 rpm | | 1 unit | Robintex Garments Under Ground |
| H) | Deep Pump | RBL Garments | | 1 unit | Robintex Garments Under Ground |
| I) | Water supply pump (including head office) | RBL Garments | | 3 unit | Outside/Yard |

| Printing Section: | | | | | |
|-------------------|-------------------------|--------------------|----------|----------|-------------------------|
| SL. No | Name of the Machineries | Name of the Brand | Model no | Quantity | Location Printing B. |
| 1 | Auto round printer | HEBBECKER, CE-2004 | Germany | 2 | G Floor |
| 2 | Printing table | K+Z Corporation | | 4 | G. Floor |
| 3 | Printing table | Jhupitar | | 3 | RBL L-3 |
| 4 | Mesh filter | K+Z Corporation | Thailand | 1 | G Floor |

| | | | | | |
|----|----------------------|----------------------------|----------|---|---------|
| 5 | Curing machine | K+Z corporation | Thailand | 2 | G Floor |
| 6 | Curing machine | HEBBECKER, CE-2004 | Germany | 1 | G Floor |
| 7 | Heat press machine | Metalnox, PTA-850, PTA-700 | Brazil | 2 | G Floor |
| 8 | Table carriage | K+Z Corporation | Thailand | 3 | G Floor |
| 9 | Screen curing oven | HEBBECKER, CE-2004 | Germany | 1 | G Floor |
| 10 | Fabrics cleaner | HEBBECKER, CE-2004 | Germany | 1 | G Floor |
| 11 | Manual round Machine | | | 2 | G Floor |

| Compressor | | | | | |
|------------|-------------------------|-------------------|----------|----------|------------------------------|
| SL. No | Name of the Machineries | Name of the Brand | Model no | Quantity | Location |
| 1 | ATLAS COPCO | Belgium | GA-22 | 1 pcs | Printing SectionNear thepond |
| 2 | FRIULAIR Dryer | INDIA | PLF-100 | 1 pcs | Printing SectionNear thepond |

| Air Conditioning Units: | | | | | |
|-------------------------|--|----------------------------|----------|----------|--------------------|
| SL. No | Name of the Machineries | Name of the Brand | Model no | Quantity | Location |
| | Miscellaneous using A/c, different brand,t | General, Amirican, Unitech | | 42 Uni | H/O, Textile, Gmts |

| Robintex (Garments Division) Sewing Machines | | | | | |
|--|-------------------------|-------------------|----------|----------|----------|
| SL. No | Name of the Machineries | Name of the Brand | Model no | Quantity | Location |
| | Plain Machine | Juki | | 134 | |
| | Plain Machine | Brother | | 174 | |
| | Plain Machine | Yamata | | 40 | |
| | Plain Machine | Taking | | 19 | |
| | OverLock Machine | Juki | | 104 | |
| | OverLock Machine | Yamato | | 167 | |
| | OverLock Machine | Pegasus | | 135 | |
| | OverLock Machine | Yamata | | 4 | |
| | OverLock Machine | Siruba | | 5 | |
| | OverLock Machine | Taking | | 5 | |
| | Flat Lock Machine | Juki | | 52 | |
| | Flat Lock Machine | Yamato | | 111 | |
| | Flat Lock Machine | Pegasus | | 63 | |

| | | | | | |
|--|----------------------------------|-------------------|--|------|--|
| | Flat Lock Machine | Siruba | | 10 | |
| | Button Hole Machine | Juki | | 6 | |
| | Button Hole Machine | Brother | | 2 | |
| | Button Stitch Machine | Juki | | 6 | |
| | Button Stitch Machine | Brother | | 2 | |
| | Feed of the Arm Machine | Juki | | 9 | |
| | Feed of the Arm (FD) Machine | Yamato | | 20 | |
| | Feed of the Arm Machine | Zusun | | 20 | |
| | Two Needle Machine | Juki | | 6 | |
| | Two Needle Machine | Brother | | 6 | |
| | Rib Cutting Machine | Chenfeng | | 4 | |
| | Rib Cutting Machine | Idea | | 1 | |
| | Rib Cutting Machine | Max | | 2 | |
| | Rib Cutting Machine | Juli | | 6 | |
| | Cutting Machine | K.M | | 16 | |
| | Kansai (PMD) Machine | Kansai | | 8 | |
| | Bertack Machine | Brother | | 6 | |
| | Auto Cutting Machine, Italy | Bierrebl, Dir-931 | | 1 | |
| | Auto Matic Front Placket Machine | Uzu | | 4 | |
| | Picoding Machine | Kansai | | 3 | |
| | Total = | | | 1151 | |

| COMPTEx BANGLADESH LIMITED | | | | | |
|----------------------------|---------------------------|---------------------|-------------|----------|---------------|
| Knitting Section | | | | | |
| SL. No | Name of the Machinerics | Name of the Brand | Model no | Quantity | Location |
| | Circular Knitting Machine | | | | |
| 1 | 30"×28G×90F | Orizio Paolo S.P.A, | JOHN/C (SJ | 7 Set | H/O 1st floor |
| 2 | 30"×28G×60F | Orizio Paolo S.P.A, | CMOAL (RIB) | 4 Set | H/O 1st floor |
| 3 | 36"×18G×78F | Zentex Asia,Pte | ZN2.1?DU | 3 Set | H/O 1st floor |
| 4 | 30"×28G×90F | Zentex Asia,Pte | ZN3?SJ | 3 Set | H/O 1st floor |
| 5 | 36"×24G×108F | BCM (Banyan tai | 90KJ | 4 | H/O 1st floor |
| 6 | 34"×24G×109F | Terrot Machine | S296-1BW | 3 Set | H/O 1st floor |
| 7 | 34"×24G×109F | Terrot Machine | S296-1BW | 2 Set | H/O G. floor |
| 8 | 36"×24G×115F | Terrot Machine | S296-1BW | 4 Set | H/O G. floor |
| | Total = | | | 30 Set | |

| Flat Knitting Machine | | | | | |
|-----------------------|----------|----------------|------------------|-------|---------|
| 1 | 84"×14GA | Stoll, Germany | CMT-211 (450 007 | 4 Set | G.Floor |

| Dyeing Section | | | | | |
|----------------|--|-------------------------------|---------------------------|----------|-------------------------|
| SL. No | Name of the Machineries | Name of the Brand | Model no | Quantity | Location Comptex old |
| 1 | High Pressure dyeing Machine | ThiesGmbH & Co,Germany | Luft-Roto Plus 140/6/1080 | 1 Unit | G.Floor |
| 2 | High Pressure dyeing Machine | ThiesGmbH & Co,Germany | Luft-Roto Plus 140/4/720 | 2 Unit | G.Floor |
| 3 | High Pressure dyeing Machine | ThiesGmbH & Co,Germany | Luft-Roto Plus 140/3/540 | 1 Unit | G.Floor |
| 4 | High Pressure dyeing Machine | ThiesGmbH & Co,Germany | Luft-Roto Plus 140/2/360 | 1 Unit | G.Floor |
| 5 | High Pressure dyeing Machine | ThiesGmbH & Co,Germany | Luft-Roto-Plus 140/4/1000 | 2 Unit | Robintex Ground Floor |
| 6 | Sample dyeing machine | ThiesGmbH & Co,Germany | Mini Soft- 140/1/40 | 1 Unit | G.Floor |
| 7 | Sample dyeing machine | ThiesGmbH & Co,Germany | Mini Soft 140/1/20 | 1 Unit | G.Floor |
| 8 | Sample dyeing machine | ThiesGmbH & Co,Germany | Mini Soft 140/1/30 | 1 Unit | G.Floor |
| 9 | Color Mixer Machine | K+Z Corporation Ltd. | KZ-04/0132 | 1 Unit | G.Floor |
| 10 | Color Mixer Machine | K+Z Corporation Ltd. | KZ-04/0131 | 1 Unit | G.Floor |
| 11 | Dryer Machine | Tubetex Textile Mahcinary,USA | 96"HQ 11 3Section Relax | 1 Unit | G. Floor |
| 12 | Color Vacuum Filtering & Tube Lifting Unit | K+Z Corporation Ltd. | KZ-04/0133 | 1 Unit | G.Floor |

| Finishing Section | | | | | |
|-------------------|-------------------------|-------------------|------------------------|----------|----------|
| SL. No | Name of the Machineries | Name of the Brand | Model no | Quantity | Location |
| 1 | Suchy Squeezer Machine | Germany | SUVAC-CUT(M.N-CUT(M.N- | 1 Unit | G.Floor |

| | | | | | |
|----|---|---------------------------------------|--------------------|--------|----------|
| 2 | Rope Opener And Expander Machine (Slitting Machine, E+L, Italy) | Monforts Textile Machinery, Germany | | 1 Unit | G.Floor |
| 3 | Finishing Padder Matex 5000 Standard | Monforts Textile Machinery, Germany | Matax 5000Standard | 2 Unit | |
| 4 | Stretching Machine with horizontal Reversed steamer chains | Monforts Textile Machinery, Germany | | 1 Unit | G.Floor |
| 5 | Relaxation Dryer Montex 4F Twin Air (4 Chamber Dryer) | Monforts Textile Machinery, Germany | Montex 4F TwinAir | 1 Unit | G.Floor |
| 6 | Weft Straightener Machine Mahlo With 6 Scanner | Monforts Textile Machinery, Germany | Orthomat RFMC-10A | 1 Unit | G.Floor |
| 7 | Stenter Frame Monter 5000-5F Twin Air Plus With Horizontally Reversed pin chain (5 Chamber Stenter) | Monforts Textile Machinery, Germany | | 1 Unit | G.Floor |
| 8 | Shrinking machine Toptex 7000 (Compacting machine) | Monforts Textile Machinery, Germany | Open Compacting | 1 Unit | G.Floor |
| 9 | Ferraro Compacting Machine With weft straightner, E+L) | Ferraro, Italy | Open Compacting | 1 Unit | G.Floor |
| 10 | Tumble Dryer | NGAI SHING DEVELOPMENT Ltd, Hong Kong | NS-2320 | 2 Unit | G. Floor |
| 11 | LK & LH stenter, 7 chamber | LK & LH co Ltd, Tiwan | ST 72800NGPL | 1 Unit | G.Floor |
| 12 | Bag Sewing Machine | MTG Textile | CCM220 | 1 Unit | G. Floor |
| 13 | Bag Sewing Machine | ABBATEX, Taiwan | AESM-188 | 1 Unit | G. Floor |

Inspection Section:

| SL. No | Name of the Machineries | Name of the Brand | Model no | Quantity | Location |
|--------|----------------------------|------------------------------------|----------|----------|----------|
| 1 | Fabrics Inspection Machine | UzuAATPR Industry Co Ltd. Thailand | UZU-F9 | 1 Unit | G.Floor |

Brushing And Shearing Section:

| SL. No | Name of the Machineries | Name of the Brand | Model no | Quantity | Location |
|--------|-----------------------------|-------------------------------|--------------|----------|----------|
| 1 | Double Drum Raising Machine | Lafer Machine, Tessali, Italy | GRI-224-2200 | 1 Unit | G. Floor |
| 2 | Shearing Machines | Lafer Machine, Tessali, | CMI-100-2200 | 1 Unit | G. Floor |

| Laboratory | | | | | |
|------------|----------------------------------|---|----------------|----------|---------------|
| SL. No | Name of the Machineries | Name of the Brand | Model no | Quantity | Location |
| 1 | .Lab Dyeing Machine | Mathis Werner, Switzerland | | 1 Unit | G. Floor |
| 2 | Lab IR Dyeing Machine | Newave Lab Equipment Co. Ltd, Taiwan | | 4 Unit | G. Floor |
| 3 | Linitest/Color fastness | Atlas Material Testing Solution, USA | | 2 Unit | Mainte.Deptt. |
| 4 | High Pressure dyeing Machine | ThiesGmbH & Co,Germany Mathis Beeker Dyeing | | 1Unit | G. Floor |
| 5 | Quick Wash Plus (Dyeing+Washing) | Raitech, Inc., Charlotte NC, USA | | 2 Unit | G. Floor |
| 6 | Lab Dryer Machine | Taiwan | | 2 Unit | G. Floor |
| 7 | Miele Dryer Machine | Germany | | 2 Unit | G. Floor |
| 8 | Miele Washing Machine | Germany | | 2 Unit | G. Floor |
| 9 | Indesit washing Machine | Italy | | 1 Unit | G. Floor |
| 10 | Data Color Management System | USA | SF600X | 2 Unit | G. Floor |
| 11 | Data Color Machine | Logic Art Automatic Co. Ltd, Taiwan | Auto lab TF-40 | 1 Unit | G. Floor |
| 12 | Data Color Machine | Logic Art Automatic Co. Ltd,Taiwan | Auto lab SPS | 1 Unit | G. Floor |
| 13 | Verivide Light Box | CAC120, UK | | 2 Unit | G. Floor |
| 14 | Measurement/Balance | FHB (300g), China AR2140(2109) | | 1 Unit | G. Floor |
| 15 | Electrolux dryer | T4130, Taiwan | | 2 Unit | G. Floor |
| 16 | Electrolux Washing | W455H | | 2 Unit | G. Floor |
| 17 | Incubutor oven dryer | MESDAN s.p.a ,Italy | | 1 Unit | G. Floor |
| 18 | ICI pilling box | MESDAN LAB ,Italy | | 1 Unit | G. Floor |
| 19 | PH Meter | HANNA | PH-8424 | 2 Unit | G. Floor |
| 20 | Perspriometer | | | 1 Unit | G. Floor |
| 21 | Crocking meter | | | 3 Unit | G. Floor |
| 22 | Sewing Machine | Pegasus | 700 | 1 Unit | G. Floor |

| SCALE | | | | | |
|--------|-------------------------|------------------------|--------------------|----------|----------------------------------|
| SL. No | Name of the Machineries | Name of the Brand | Model no | Quantity | Location |
| 1 | Analog scale | ZHUN SHENG,CHINA | | 4pcs | G. Floor (including underground) |
| 2 | Digital scale | OHAUS Corporation, USA | CD-11 (Nmax- 5000) | 5 pcs | G. Floor (including underground) |

| Air Conditioning Units: | | | | | |
|-------------------------|--|----------------------------|----------------------------|----------|-------------------------|
| SL. No | Name of the Machineries | Name of the Brand | Model no | Quantity | Location |
| 1 | Comptex Monforts Panel AC | Unitech, Singapore | Duct Type (3 Ton each) | 2 Unit | G. Floor |
| 2 | Comptex Flat Knitting Section | Unitech, Singapore | Duct Type (5 Ton) | 1 Unit | G. Floor |
| 3 | Central Laboratory | Unitech, Singapore | Split Type(3 | 3 Unit | G. Floor |
| 4 | Comptex Monforts panel A/c | Unitech, Singapore | Window Type (1.5 Tone each | 4 Unit | G. Floor |
| 5 | Miscellaneous using A/c, different brand,type & capacity | General, American, Unitech | Split/Window | 21 Unit | Office, Auto Cad & Gmts |

| UTILITY SERVICES: | | | | | |
|-------------------|-------------------------|-------------------|----------|----------|----------|
| SL. No | Name of the Machineries | Name of the Brand | Model no | Quantity | Location |
| A) | Generator (GAS) | | | | |
| | 1.CATERPILLAR, 1030Kw | S.A.R.L USA | G3516 | 3 pcs | G. Floor |
| B) | Compressor | | | | |
| | 1. ATLAS COPCO | Belgium | GA-55 | 1 pcs | G. Floor |
| | 2. ATLAS COPCO | Belgium | GA-55+ | 1 pcs | G. Floor |
| | 3. KAESER Compressor | Germany | ASD-47 | 3 pcs | G. Floor |
| C) | Air Compressor Dryer | | | | |
| | 1.KAESER Dryer | Germany | TD-51 | 3 pcs | G. Floor |
| | 3.FRIULAIR Dryer | INDIA | ACT-120T | 2 pcs | G. Floor |
| D) | Boiler | | | | |
| | 1. Thermax, 8000 kg/h | India | SHELMAX | 1 pcs | G. Floor |

| | | | | | |
|-----------|---|--------------------|----------------------------|--------|--------------|
| | 2. Thermax, 1247 kg/h; Exhaust Gas Boiler | India | SHELMAX | 1 pcs | 1st Floor |
| E) | W.T.P | | | | |
| | Raw Water Pump Motor | Siemen's, Pakistan | 20HP, | 3 unit | Under Ground |
| | Drinking Water Motor | Pedrollo, Italy | 2.2kw,2900rpm | 2 unit | Under Ground |
| | Cooling Tower Motor | Crompto Greaves | 3-FInduction | 2 unit | Under Ground |
| | Treated Water Pump Motor | Crompto Greaves | 3-FInduction | 2 unit | Under Ground |
| | Generator Water Makeup Pump Duijvelaar | Singapore | DPV-4-60, 1.1 kw, | 1 unit | Under Ground |
| | Warm Water Pump Motor | Crompton Greaves | 3-ΦInduction | 2 Unit | Under Ground |
| | Fire Fighting Pump Motor | TECO Electric | 3-ΦInduction | 2 Unit | Under Ground |
| | Fire Fighting Pressure Pump Motor | TECO Electric | 3-ΦInduction | 1 Unit | Under Ground |
| | Deep Pump Motor | Sigma Pump | 22kw, 240m ³ /h | 2 Unit | Under Ground |
| | | | | | |

E.T.P

| | | | | | |
|-----------|-------------------|------------------------|---------------|--------|-------|
| F) | ECR for ETP | Singapur New Purchases | Model:T-40 | 1 Unit | |
| | Type: Biochemical | ION-Exchange, India | | 1 Unit | |
| | 1. Air Blower | India | Bharat Bijlee | 2 Unit | E.T.P |
| | 2. Air Blower | Taiwan | Greetech | 2 Unit | E.T.P |
| | 3. Feed Pump | Sigma, India | | 4 Unit | E.T.P |
| | 4. BTFF Pump | Sigma, India | | 4 Unit | E.T.P |
| | 5. Centrifuge | ION-Exchange, India | | 1 Unit | E.T.P |

Workshop

| SL. No | Name of the Machineries | Name of the Brand | Model no | Quantity | Location |
|--------|-------------------------|-------------------|----------|----------|------------------|
| | Combined Lathe Machine | DAINICHI, Japan | | 1 Unit | Central Workshop |
| | Lathe Machine | Poland | | 1 Unit | Central Workshop |
| | Argon Welding M/c | | | 1 Unit | Central Workshop |
| | Welding m/c | | | 1 Unit | Central Workshop |
| | Shearing m/c | | | 2 Unit | Central Workshop |
| | Hand & hammer drill m/c | | | 1 Unit | Central Workshop |
| | Gas cutting sets | | | 1 Unit | Central Workshop |
| | Milling Machine | Moscow, Russia | | 1 Unit | Central Workshop |
| | Pipe Bander Machine | | | 1 Unit | Central Workshop |
| | Sheet Bander Machine | | | 2 Unit | Central Workshop |
| | Table Grinder | | | 1 Unit | Central Workshop |
| | Hy-Speed Cutter | | | 1 Unit | Central Workshop |

| | Padstand Dril Machine | | | 1 Unit | Central Workshop |
|--|-------------------------|-------------------|----------|----------|------------------|
| | | | | | |
| Comptex (Garments Division) Sewing Machines | | | | | |
| SL. No | Name of the Machineries | Name of the Brand | Model no | Quantity | Location |
| | Auto Cutting Machine | Garber, Germany | | 1 | |
| | Auto Cutting Table | | | 3 | |
| | Plain Machine | Juki | | 16 | |
| | Plain Machine | Brother | | 197 | |
| | OverLock Machine | Pegasus | | 102 | |
| | OverLock Machine | Yamato | | 42 | |
| | Flat Lock Machine | Pegasus | | 54 | |
| | Flat Lock Machine | Juki | | 4 | |
| | Flat Lock Machine | Yamato | | 62 | |
| | Button Hole Machine | Brother | | 10 | |
| | Button Hole Machine | Juki | | 1 | |
| | Button Stitch Machine | Brother | | 10 | |
| | Button Stitch Machine | Juki | | 1 | |
| | Two Needle Machine | Juki | | 4 | |
| | Two Needle Machine | Brother | | 3 | |
| | Rib Cutting Machine | Idea | | 7 | |
| | Cutting Machine | K.M | | 8 | |
| | Thread Re Cone Machine | Hashima | | 3 | |
| | Bertack Machine | Juki | | 10 | |
| | Total = | | | 538 | |

Robintex Group

Electrical Appliances Status in Garments

| Sl. No | Items Name | Quantity | Unit | Remarks |
|--------|------------------------|-------------|------------|----------------------|
| 1 | 4' Tube Light | 2250 | Pcs | Robintex Garments |
| 2 | 4' Tube Light | 1582 | " | Comptex New Building |
| 3 | 4' Tube Light | 1038 | " | Comptex Old Building |
| 4 | 4' Tube Light | 258 | " | Canteen |
| | 4' Tube Light | 35 | " | Canteen |
| | Total = | 5163 | pcs | |
| 1 | 2' Tube Light | 82 | Pcs | Robintex Garments |
| 2 | 2' Tube Light | 46 | " | Comptex New Building |
| 3 | 2' Tube Light | 32 | " | Comptex Old Building |
| | Total = | 160 | pcs | |
| 1 | Ceiling Fan | 338 | Pcs | Robintex Garments |
| 2 | Ceiling Fan | 276 | " | Comptex New Building |
| 3 | Ceiling Fan | 181 | " | Comptex Old Building |
| 4 | Ceiling Fan | 7 | " | Printing Division |
| 5 | Ceiling Fan | 32 | " | Canteen |
| | Total = | 834 | pcs | |
| 1 | Exhaust Fan Big Size | 20 | Pcs | Robintex Garments |
| 2 | Exhaust Fan Big Size | 8 | " | Comptex New Bulding |
| 3 | Exhaust Fan Big Size | 10 | " | Comptex Old Building |
| | Total = | 38 | pcs | |
| 1 | Exhaust Fan Small Size | 8 | Pcs | Robintex Garments |
| 2 | Exhaust Fan Small Size | 6 | " | Comptex New Building |
| 3 | Exhaust Fan Small Size | 4 | " | Comptex Old Building |
| 4 | Exhaust Fan Small Size | 4 | " | Printing Division |
| | Total = | 22 | pcs | |
| 1 | Wall Mounting Fan | 4 | pcs | Robintex Garments |
| 2 | Wall Mounting Fan | 1 | " | Comptex New Building |
| 3 | Wall Mounting Fan | 1 | " | Comptex Old Building |
| 4 | Wall Mounting Fan | 2 | " | Printing Division |
| | Total = | 8 | pcs | |
| 1 | Thread Sucker | 4 | Set | Robintex Garments |

| | | | | |
|---|-------------------------|------------|------------|----------------------|
| 2 | Thread Sucker | 3 | " | |
| 3 | Thread Sucker | 3 | " | |
| | Total = | 10 | Set | |
| 1 | Steam Iron | 56 | Pcs | Robintex Garments |
| 2 | Steam Iron | 56 | " | Comptex New Building |
| 3 | Steam Iron | 28 | " | Comptex Old Building |
| | Total = | 140 | pcs | |
| 1 | Vacuum Iron Table | 64 | Pcs | Robintex Garments |
| 2 | Vacuum Iron Table | 56 | " | Comptex New Building |
| 3 | Vacuum Iron Table | 28 | " | Comptex Old Building |
| | Total = | 148 | pcs | |
| 1 | Needle Detector Machine | 4 | Pcs | Robintex Garments |
| 2 | Needle Detector Machine | 3 | " | Comptex New Building |
| 3 | Needle Detector Machine | 2 | " | Comptex Old Building |
| | Total = | 9 | pcs | |
| 1 | Fussing Machine | 3 | Set | Robintex Garments |
| | Total = | 3 | Set | |

Robintex Group Electrical Appliances Status in Textile

| Sl. No | Items Name | Quantity | Unit | Remarks |
|--------|----------------|-------------|------------|-----------------------------|
| 1 | 4' Tube Light | 455 | Pcs | Robintex Textile & knitting |
| 2 | 4' Tube Light | 80 | " | Comptex New Building |
| 3 | 4' Tube Light | 550 | " | Comptex Old Building |
| 4 | 4' Tube Light | 124 | " | Comptex knitting |
| 5 | 4' Tube Light | 410 | " | Head office,ETP,WTP,Boun |
| | Total = | 1619 | pcs | |
| 1 | 2' Tube Light | 22 | Pcs | Robintex |
| 2 | 2' Tube Light | 80 | " | Comptexnew& old |
| 3 | 2' Tube Light | 16 | " | Head office |
| | Total = | 118 | pcs | |

| | | | | |
|---|-----------------------------|------------|------------|-----------------------------|
| 1 | Ceiling Fan | 21 | Pcs | Robintex textile & office |
| 2 | Ceiling Fan | 11 | " | Comptex textile . |
| 3 | Ceiling Fan | 9 | " | Comptex newBuilding |
| 4 | Ceiling Fan | 26 | " | Dormetory & workshop |
| 5 | Ceiling Fan | 2 | " | ETP , others |
| | Total = | 69 | pcs | |
| 1 | Exhaust Fan Big Size | 4 | Pcs | Robintex Textile & knitting |
| 2 | Exhaust Fan Big Size | 3 | " | Comptex new building |
| 3 | Exhaust Fan big size . | 14 | " | Comptex Textile . |
| | Total = | 21 | pcs | |
| 1 | Exhaust Fan Small Size | 6 | Pcs | Robintex textile , |
| 2 | Exhaust Fan Small Size | 14 | " | Comptex textile . |
| | Total = | 20 | pcs | |
| 1 | Wall Mounting Fan | 2 | Pcs | Robintex Textile & knitting |
| 2 | Wall Mounting Fan | 4 | " | Comptex textile . |
| | Total = | 6 | Pcs | |
| 1 | Exhaust fan small | 10 | Pcs | Robintex textile |
| 2 | Exhaust fan small | 8 | " | Comptex textile. |
| 3 | Exhaust fan small | 2 | " | Comptex new building |
| | total = | | Pcs | |
| 1 | Electrical Iron | 1 | Pcs | Robintex Textile |
| 2 | Electrical Iron | 2 | " | Comptex textile . |
| | Total = | 3 | Pcs | |
| 1 | Electrical kettly. | 1 | Pcs | Robintex Textile |
| 2 | Electrical kettly. | 2 | " | Comptex |
| 3 | Electrical kettly. | 1 | " | Head office |
| | Total = | 4 | Pcs | |
| 1 | Energy saving light , 15 W. | 62 | Pcs | Robintex knitting |
| 2 | Energy saving light , 15 W. | 88 | " | Comptex knitting |
| 3 | Energy saving light 65W | 24 | " | Robintex Group Boundary |
| | Total = | 174 | Pcs | |
| 1 | Search light set , 400w, | 5 | Set | comptex & Robintex . |
| | Total = | 5 | Set | |
| 1 | Padestal fan | 7 | Pcs | Comptex Textile |
| 2 | Padestal fan | 2 | " | Comptex LK Stanter Floor |
| | Total = | 9 | Pcs | |